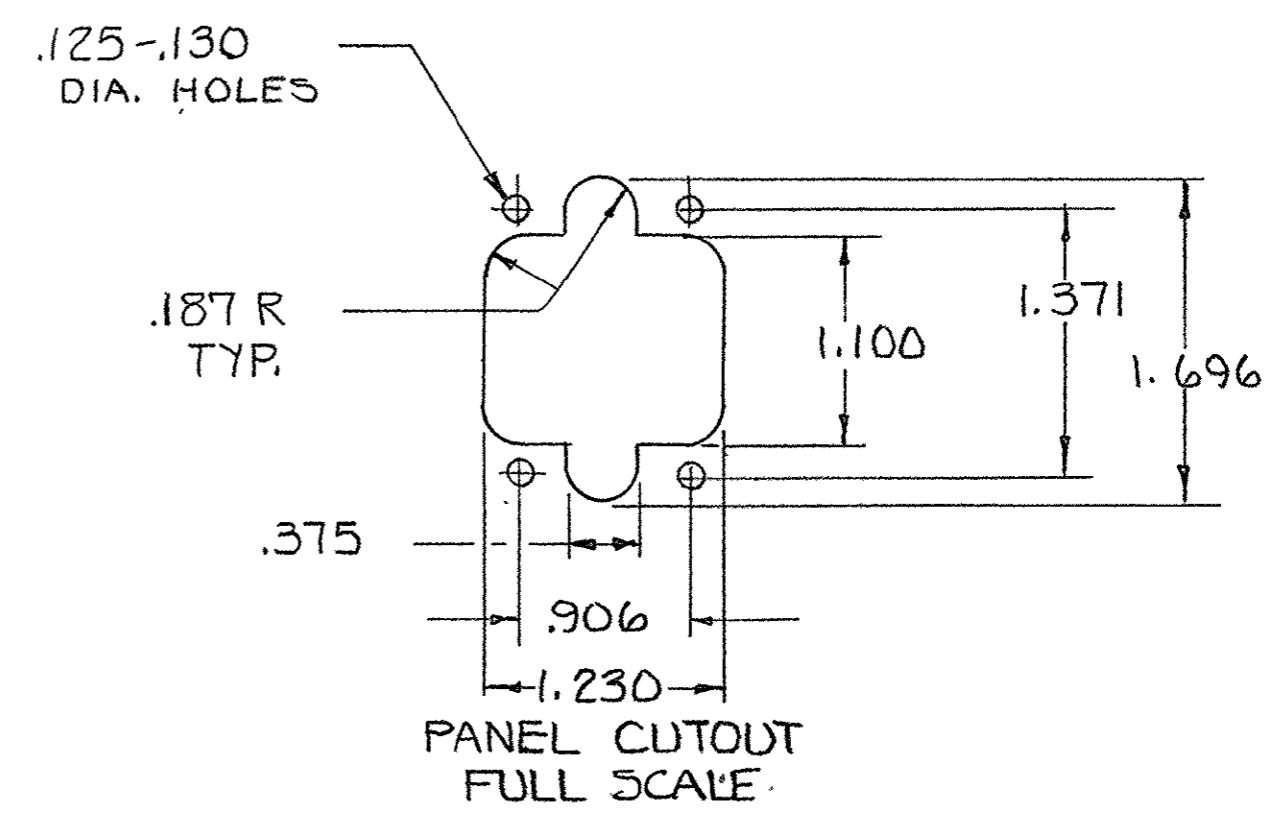
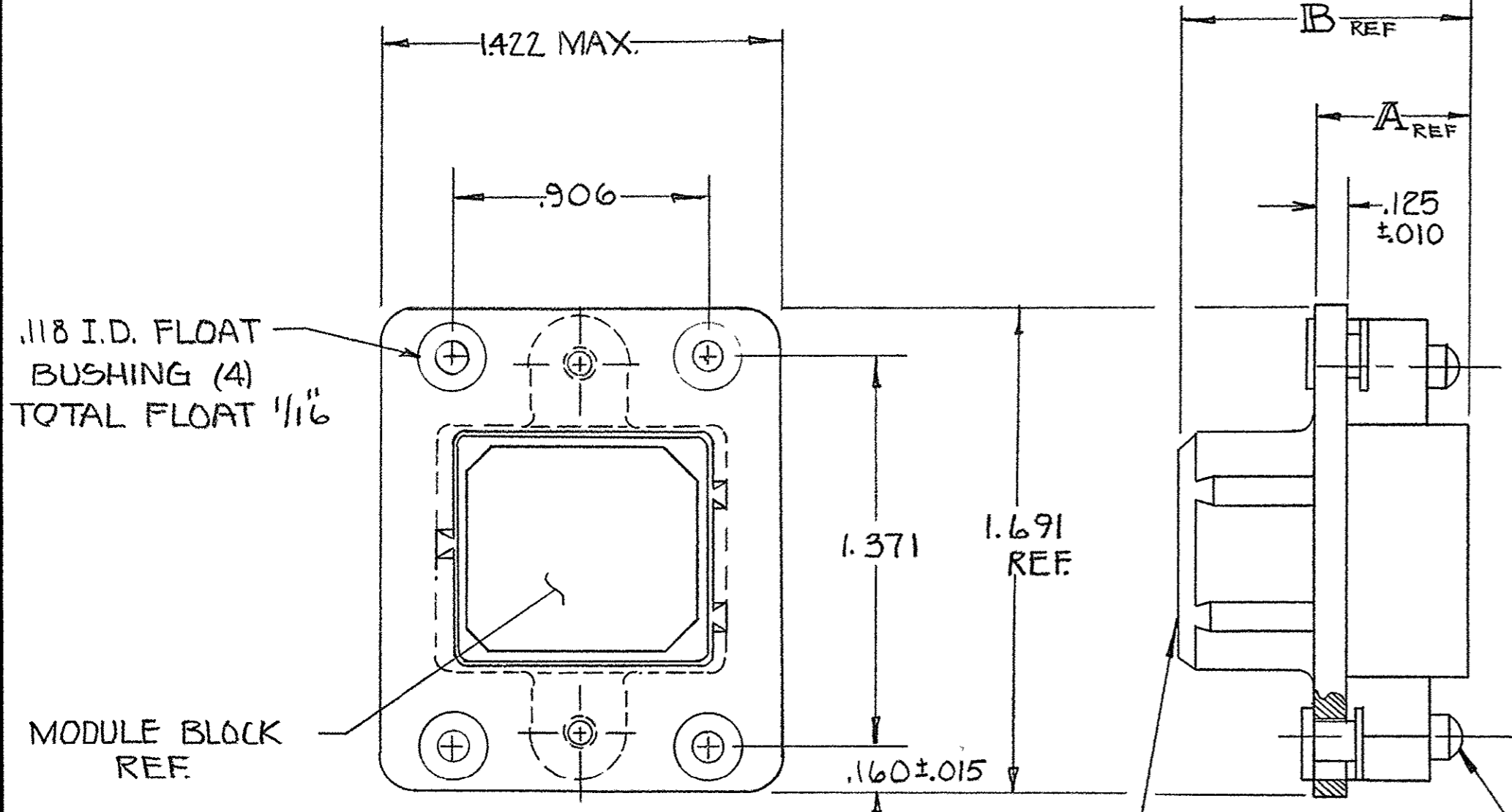


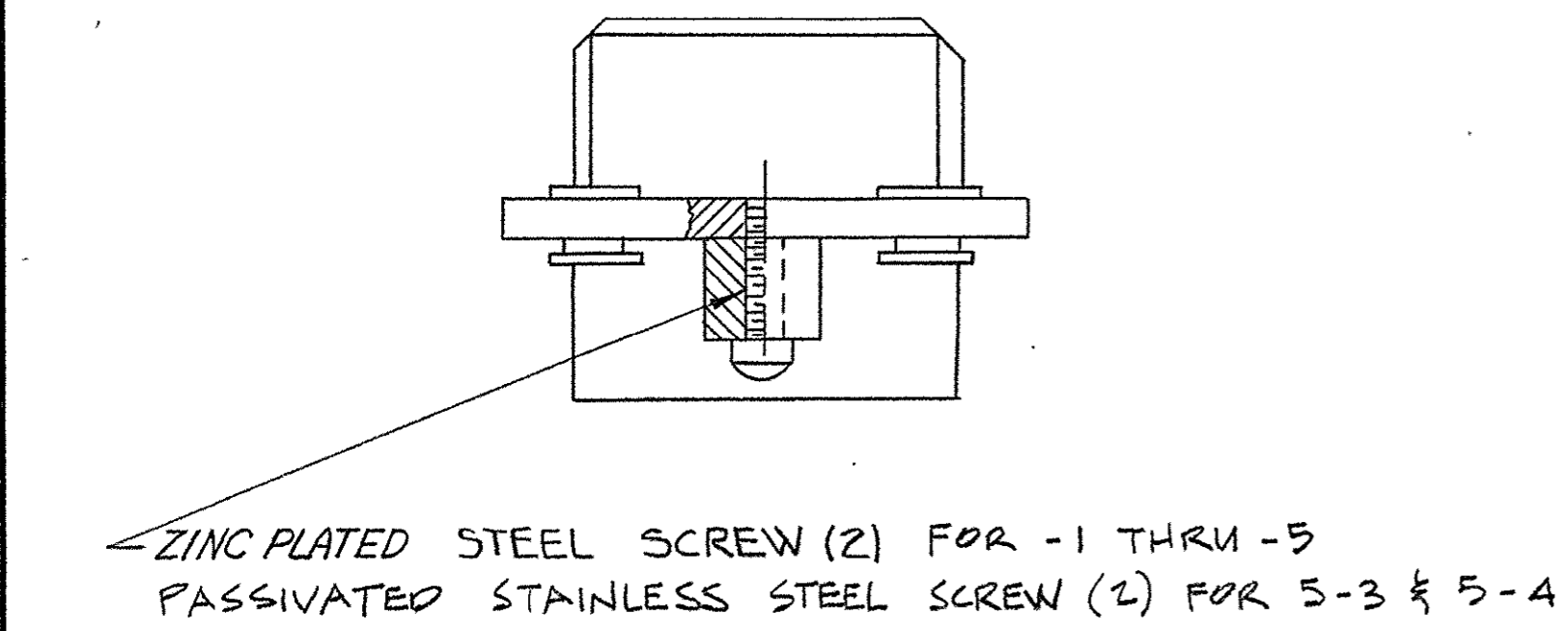
© 1963 BY AMP INCORPORATED. ALL RIGHTS RESERVED. AMP PRODUCTS COVERED BY PATENTS AND/OR PATENTS PENDING. APPROVED PER GOVT CONTRACT NO.

REVISIONS				
ZONE	LTR	DESCRIPTION	DATE	APPROVED
	G	REDRAWN WITHOUT CHANGE ECN Y12B	12-7-66	W.H.
	H	REVISE SHEET TOLERANCE PER ECN Z-632	7-15-68	W.H./J.W.
	H1	REV. PER ECN D-644	9-17-75	W.H.
	J	REV. / ECN H-220	8-14-80	E.F.
	K	ADD -5 & REV. PER ECN R-1135	3-21-85	SDG
	L	OBSOLETE -1 PER ECN R-2604	2-19-87	SDG
	M	REV PER ECO-05-001412	05/05	AA/DE
	N	REV PER ECO-05-005359	11-14-05	PY/DE



SUPERSEDED BY 5-202275-3
 SUPERSEDED BY 5-202275-4

ASS'Y NO.	FINISH	A	B
202275-1	OBSOLETE ZINC PLATE PER ASTM-B-633 TYPE II CLASS 3 COLORLESS SUPPLEMENTARY CHROMATE	.480	1.010
202275-2	OLIVE DRAB ZINC PLATE PER. ASTM-B-633 CLASS 3. TYPE II	.480	1.010
202275-3	PLATED ZINC PER ASTM-B-633 TYPE II CLASS 3 COLORLESS SUPPLEMENTARY CHROMATE	.480	1.010
202275-4	FINISH SAME AS -3	.886	1.416
202275-5	CADMIUM PLATE W/YELLOW CHROMATE CONVERSION PER QQ-P-416, TYPE III, CLASS 3	.480	1.010
5-202275-3	FINISH: PLATED ELECTROLESS NICKEL PER SAE-AMS-C-2607A .000400-.000800 THK (NO INTENTIONAL ADDITIONS OF LEAD OR CHROMIUM PER DFE STD 230-700)	.480	1.010
5-202275-4	FINISH: PLATED ELECTROLESS NICKEL PER SAE-AMS-C-2607A .000400-.000800 THK (NO INTENTIONAL ADDITIONS OF LEAD OR CHROMIUM PER DFE STD 230-700)	.886	1.416



AMP INFO
 LOC PRINT DIST
 R 391 N 5058

UNLESS OTHERWISE SPECIFIED DIMENSIONS ARE IN INCHES TOLERANCES ON FRACTIONS DECIMALS ANGLES ± 1/64 ± .005 ± .1		CONTRACT NO		AMP INCORPORATED HARRISBURG, PENNSYLVANIA	
MATERIAL SHELL-DIE CAST ALUMINUM		DR R.O. Baker	DATE 1-27-66	NAME SERIES "G" PLUG ASSEMBLY MODULE (ONE BLOCK) WITH FLOATING BUSHINGS	
HEAT TREAT H		CHK S.S. Hende	DATE 2/1/66	SIZE C	CODE IDENT NO 00779
FINISH SEE TABLE		DSGN ENGR J.W. Hildebrand	DATE 3-6-66	NUMBER 202275	SCALE 2:1
		APPD W.B. Mullen	DATE 2-3-66	SHEET 1 OF 1	