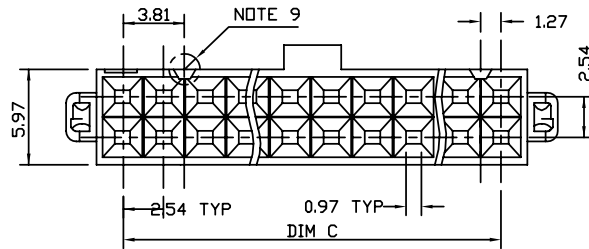
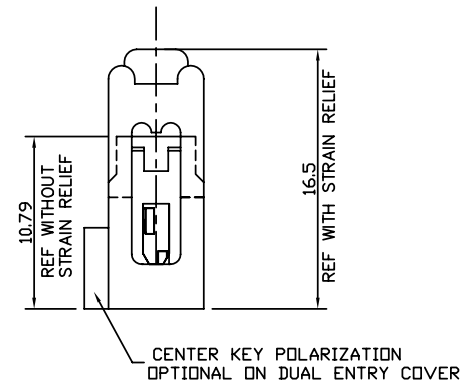
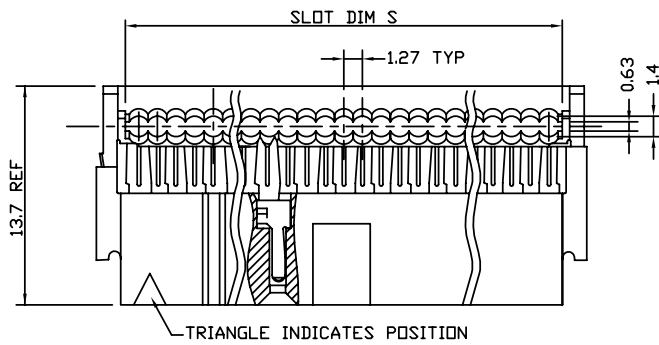
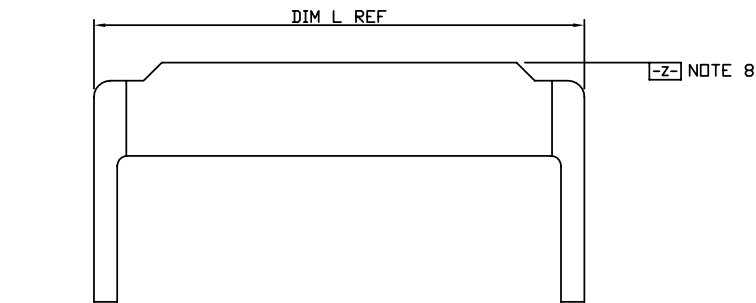


PRODUCT NO.
SEE TABLE



Copyright FCI.

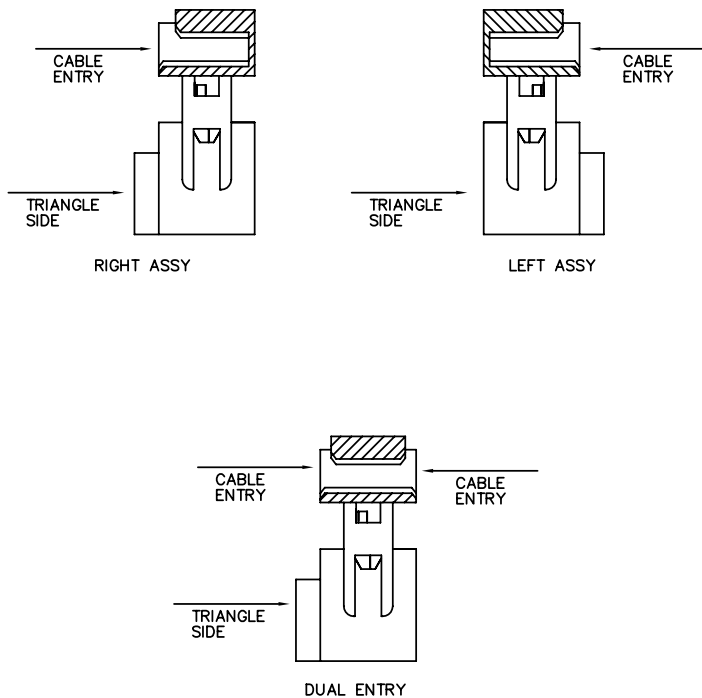


| | | | | | | | | | |
|-------------|----------------|-----|------------|---------------------------------------|------------|----------|---------------|---|--|
| mat'l. code | | | | tolerances unless otherwise specified | | | CUSTOMER COPY | FCI www.fciconnect.com | |
| ltr | ecn no | dr | date | linear | .X ± 0.1 | | projection | title DUAL POLARIZED QUICKIE II ASSEMBLY | |
| P | V22169 | MSC | 1992-05-21 | | .XX ± 0.05 | | | | |
| R | N05-0368 | GUL | 2005-12-27 | angles | ±2° | | INCH/MM | product family QUICKIE code NT | |
| S | N09-0400 | A.Z | 2010-01-18 | | | | | | |
| | | | | dr | GuLing | 12/27/05 | scale 1:1 | product family QUICKIE size A4 dwg no 66901 sheet 1 of 2 | |
| | | | | engr | TaoDeniel | 12/27/05 | | | |
| | | | | chr | TaoDeniel | 12/27/05 | | | |
| | | | | appd | Jason Zhou | 12/27/05 | | | |
| sheet index | revision sheet | s | 1-2 | | | | | | |

| PRODUCT NO. | SIZE | DIM L | DIM S | DIM C |
|-----------------|------|-------|-------|-------|
| 66901-X10/X10LF | 2X5 | 17.27 | 13.21 | 10.16 |
| -X14/X14LF | 2X7 | 22.35 | 18.29 | 15.24 |
| -X16/X16LF | 2X8 | 24.89 | 20.83 | 17.78 |
| -X20/X20LF | 2X10 | 29.97 | 25.91 | 22.86 |
| -X24/X24LF | 2X12 | 35.05 | 30.99 | 27.94 |
| -X26/X26LF | 2X13 | 37.59 | 33.53 | 30.48 |
| -X30/X30LF | 2X15 | 42.67 | 38.61 | 35.56 |
| -X34/X34LF | 2X17 | 47.75 | 43.69 | 40.64 |
| -X40/X40LF | 2X20 | 55.37 | 51.31 | 48.26 |
| -X44/X44LF | 2X22 | 60.45 | 56.39 | 53.34 |
| -X50/X50LF | 2X25 | 68.07 | 64.01 | 60.96 |
| 66901-X60/X60LF | 2X30 | 80.77 | 76.71 | 73.66 |


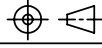
| DASH NO | STYLE | COVER ORIENTATION | POLARIZATION | STRAIN RELIEF |
|---------|-------|-------------------|------------------------|---------------|
| -0XX | THRU | DUAL ENTRY | DUAL POL. | YES |
| -1XX | THRU | DUAL ENTRY | DUAL POL. | NO |
| -2XX | THRU | DUAL ENTRY | CENTER KEY & DUAL POL. | YES |
| -3XX | THRU | DUAL ENTRY | CENTER KEY & DUAL POL. | NO |
| -4XX | BLIND | RIGHT | DUAL POL. | YES |
| -5XX | BLIND | RIGHT | DUAL POL. | NO |
| -6XX | BLIND | LEFT | DUAL POL. | YES |
| -7XX | BLIND | LEFT | DUAL POL. | NO |
| -8XX | BLIND | RIGHT | CENTER KEY & DUAL POL. | YES |
| -9XX | BLIND | LEFT | CENTER KEY & DUAL POL. | YES |

COVER ORIENTATION



NOTES:

1. TERMINAL MATERIAL: FULL HARD PHOS. BRONZE ALLOY. UNS-C51000.
2. TERMINAL PLATING: 50u"/1.27um MIN Ni UNDERPLATE OVER ENTIRE TERMINAL AND 50u"/1.27um MIN Au OR GXT IN CONTACT AREA ONLY.
3. MOLDING MATERIAL: BASE & COVER-GLASS FILLED POLYESTER. FLAME RETARDANT PER UL94V-0. COLOR-BLUE.
4. CONNECTOR ASSEMBL ES PACKAGED IN TUBES.
5. THE FIST TWO CAVITY POSITIONS AND THE LAST TWO. ARE IDENTIFIED BY NUMBER.
6. POLARIZING FEATURES ARE DESCRIBED IN TABLE.
7. MOLDING MATERIAL: STRAIN RELIEF-NYLON, FLAME RETARDANT PER UL 94V-0,COLOR-BLUE.
8. STRAIN RELIEF DIM APPLIES WHEN DATUM -Z- IS HELD IN A RESTRAINED CONDITION.
9. THE POLARIZING FEATURE ON THIS END IS NON-EXISTANT ON 2X5 AND 2X7 POSITION CONNECTORS.
10. 2X5 POSITION NOT AVAILABLE WITH POLARIZATION SLOT ON CENTER KEY STYLE.
11. PRODUCT NUMBER 66901-XXX ^{LF} LEAD FREE OPTION
12. WITH "LF" MARK, TERMINAL PLATING: 50u"/1.27um MIN Ni UNDERPLATE OVER ENTIRE TERMINAL AND 50u"/1.27um MIN Au OR GXT IN CONTACT AREA ONLY.
13. FOR LEAD FREE P/N, THE PRODUCT MEET EUROPEAN UNION DIRECTIVES AND OTHER COUNTRY REGULATION AS DESCRIBED IN GS-22-008.
14. FOR LEAD FREE P/N, THE PLASTIC PART WILL WITHSTAND EXPOSURE TO 260°C PEAK TERMERATURE FOR 10 SECONDS IN A WAVE SOLDER REFLOW.
15. PRODDUCT SPEC. BUS-12-082
16. PLATING OPTIONS: MAY BE EITHER GOLD OR GXT PLATED AT MANUFACTURER'S OPTION.

| | | | |
|---------------------------------------|------------------------|---|---|
| tolerances unless otherwise specified | | CUSTOMER COPY |  www.fcjconnect.com |
| linear | .X ± 0.1 .XX ± 0.05 | projection | |
| angles | ±2° |  | product family QUICKIE code NT |
| dr | GuLing 12/27/05 | INCH/MM | size dwg no |
| engr | TaoDeniel 12/27/05 | scale | A4 66901 |
| chr | TaoDeniel 12/27/05 | 1:1 | sheet 2 of 2 |
| appd | Jason Zhou 12/27/05 | | |

