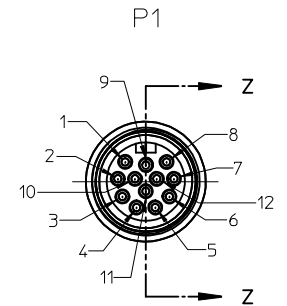
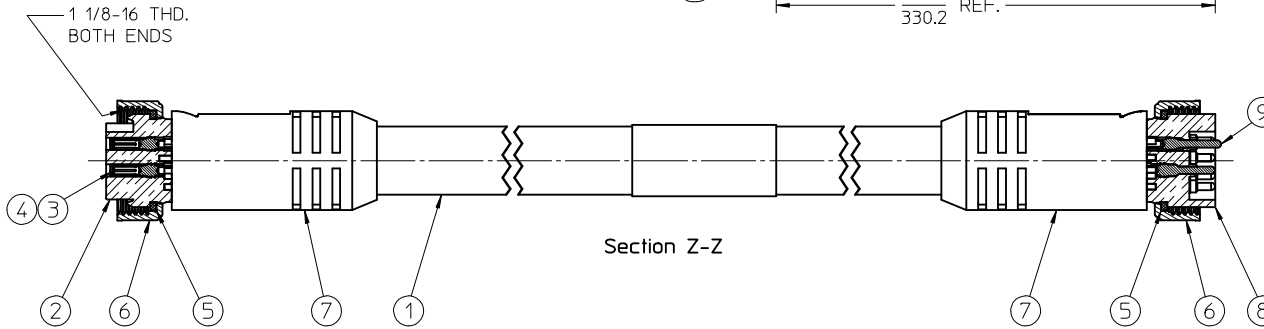
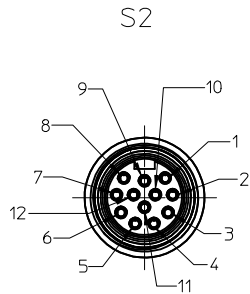
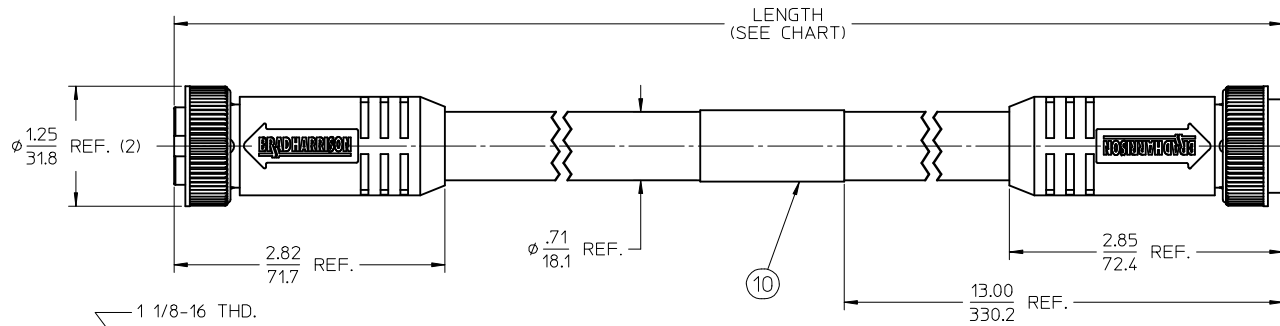
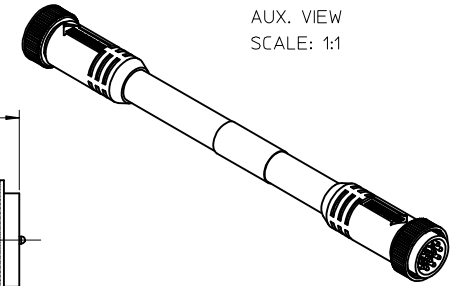


PART NUMBER	ENGINEERING NO.	LENGTH
1300120113	332020A01F060	6' 0" +2.19 - 0 [1.8M +55.6 - 0]
1300120119	332020A01F120	12' 0" +3.50 - 0 [3.7M +88.9 - 0]
1300120127	332020A01F200	20' 0" +6.50 - 0 [6.1M +165.1 - 0]



- NOTES:
1. MATERIAL: SEE TABLE
 2. FINISHES: SEE TABLE
 3. CABLE ASSEMBLIES ARE BAGGED SEPERATELY IN POLY BAGS WITH BARCODE LABEL ATTACHED TO OUTSIDE OF BAG
 4. WRAP LABEL IS MARKED WITH P/N, DATE CODE VOLTAGE & AMPERAGE
 5. MATES WITH: MINI CHANGE, C-SIZE 12 POLE RECEPTACLE
 6. ELECTRICAL SPECIFICATIONS:
VOLTAGE RATING: 600V
CURRENT RATING: 5 AMPS
 7. ASSEMBLY IS RoHS COMPLIANT

S2	P1	
1	ORANGE	1
2	BLUE	2
3	WHITE/BLACK	3
4	RED/BLACK	4
5	GREEN/BLACK	5
6	ORANGE/BLACK	6
7	BLUE/BLACK	7
8	BLACK/WHITE	8
9	GREEN/YELLOW	9
10	RED	10
11	WHITE	11
12	BLACK	12

WIRING DIAGRAM

ITEM	QTY.	DESCRIPTION	MATERIAL	FINISH
10	1	LABEL	PLASTIC FILM	BLACK/YELLOW
9	12	PIN CONTACT	BRASS	GOLD PLATED
8	1	INSERT, MALE, 12 POLE	PVC	YELLOW
7	2	OVERMOLD	PVC	YELLOW
6	2	COUPLING NUT	ZINC DIE CAST	BLACK
5	2	FRICION RING	NYLON	NATURAL
4	12	SOCKET CONTACT	BRASS	GOLD PLATED
3	12	SOCKET SLEEVE	STAINLESS STEEL	
2	1	INSERT, FEMALE, 12 POLE	PVC	YELLOW
1	1	CABLE, 16-12 ST00W/ST	PVC JACKET	YELLOW

RELEASED EC NO: MNA2010-0101 DRAWN BY: DRWINRSTONE 2009/08/17 CHKD BY: WOODMAN APPR: J.MURPHY 2009/08/21 DESCRIPTION	QUALITY SYMBOLS	GENERAL TOLERANCES (UNLESS SPECIFIED)	DIMENSION STYLE	SCALE	DESIGN UNITS	THIRD ANGLE PROJECTION											
	$\nabla=0$ $\nabla=0$	<table border="1"> <tr><th>mm</th><th>INCH</th></tr> <tr><td>4 PLACES ± ---</td><td>± ---</td></tr> <tr><td>3 PLACES ± ---</td><td>± ---</td></tr> <tr><td>2 PLACES ± ---</td><td>± .01</td></tr> <tr><td>1 PLACE ± 0.3</td><td>± ---</td></tr> </table>	mm	INCH	4 PLACES ± ---	± ---	3 PLACES ± ---	± ---	2 PLACES ± ---	± .01	1 PLACE ± 0.3	± ---	IN/MM	1:1	INCH		
	mm	INCH															
	4 PLACES ± ---	± ---															
3 PLACES ± ---	± ---																
2 PLACES ± ---	± .01																
1 PLACE ± 0.3	± ---																
	<table border="1"> <tr><td>DRAWN BY</td><td>DATE</td></tr> <tr><td>R.STONE</td><td>2009/08/13</td></tr> <tr><td>CHECKED BY</td><td>DATE</td></tr> <tr><td>B.WOODMAN</td><td>2009/08/17</td></tr> <tr><td>APPROVED BY</td><td>DATE</td></tr> <tr><td>J.MURPHY</td><td>2009/08/20</td></tr> </table>	DRAWN BY	DATE	R.STONE	2009/08/13	CHECKED BY	DATE	B.WOODMAN	2009/08/17	APPROVED BY	DATE	J.MURPHY	2009/08/20	TITLE	MINI-CHANGE MALE/FEM 12 POLE, 16 AWG		
DRAWN BY	DATE																
R.STONE	2009/08/13																
CHECKED BY	DATE																
B.WOODMAN	2009/08/17																
APPROVED BY	DATE																
J.MURPHY	2009/08/20																
	DRAFT WHERE APPLICABLE MUST REMAIN WITHIN DIMENSIONS	SEE CHART	MOLEX INCORPORATED		SHEET NO. 1 OF 1												